

# Social enterprise & crime prevention

**Dr Kate Barrelle**

CVE consultant

Clinical & Forensic Psychologist

STREAT Co-Founder & Chief Impact Officer

[kate.barrelle@streat.com.au](mailto:kate.barrelle@streat.com.au)

[www.streat.com.au](http://www.streat.com.au)

0414 437 940

**STREAT**  
Tastes good, does good.



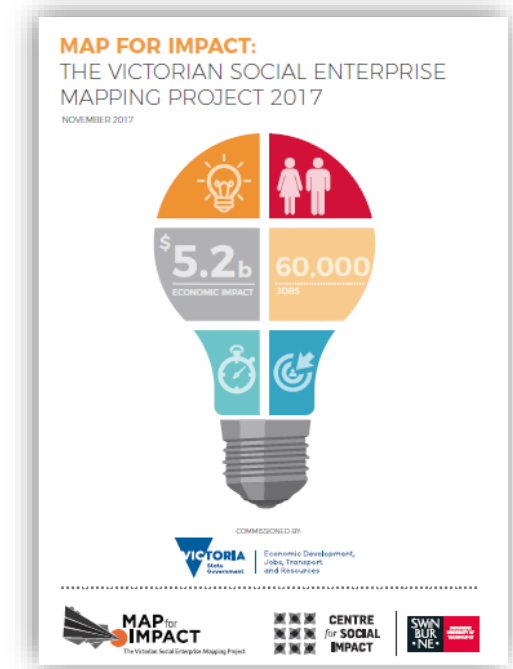


## Overview

- What is a work integration social enterprise (WISE)?
- Why do WISEs have so much potential for crime prevention?
- Examples of WISEs that target crime prevention
- Ideas for a state-wide, social enterprise, youth justice strategy

# Social enterprises

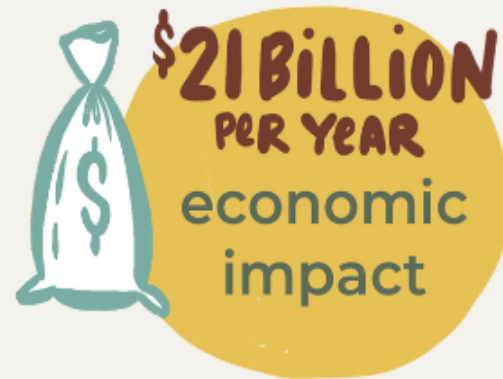
- Exist to protect the environment, tackle social problems, and/or improve communities
- Derive most income from business (not donations or grants)
- Uses majority of their profit to contribute to their mission
- Business engine with social and environmental outcomes
- ‘Empathy enterprises’ that are highly inclusive and ethical



# The size and economic contribution of social enterprise in Australia



There are over 12,000 social enterprises in Australia.



They contribute \$21.3 billion to the Australian economy each year and account for 1% of GDP.

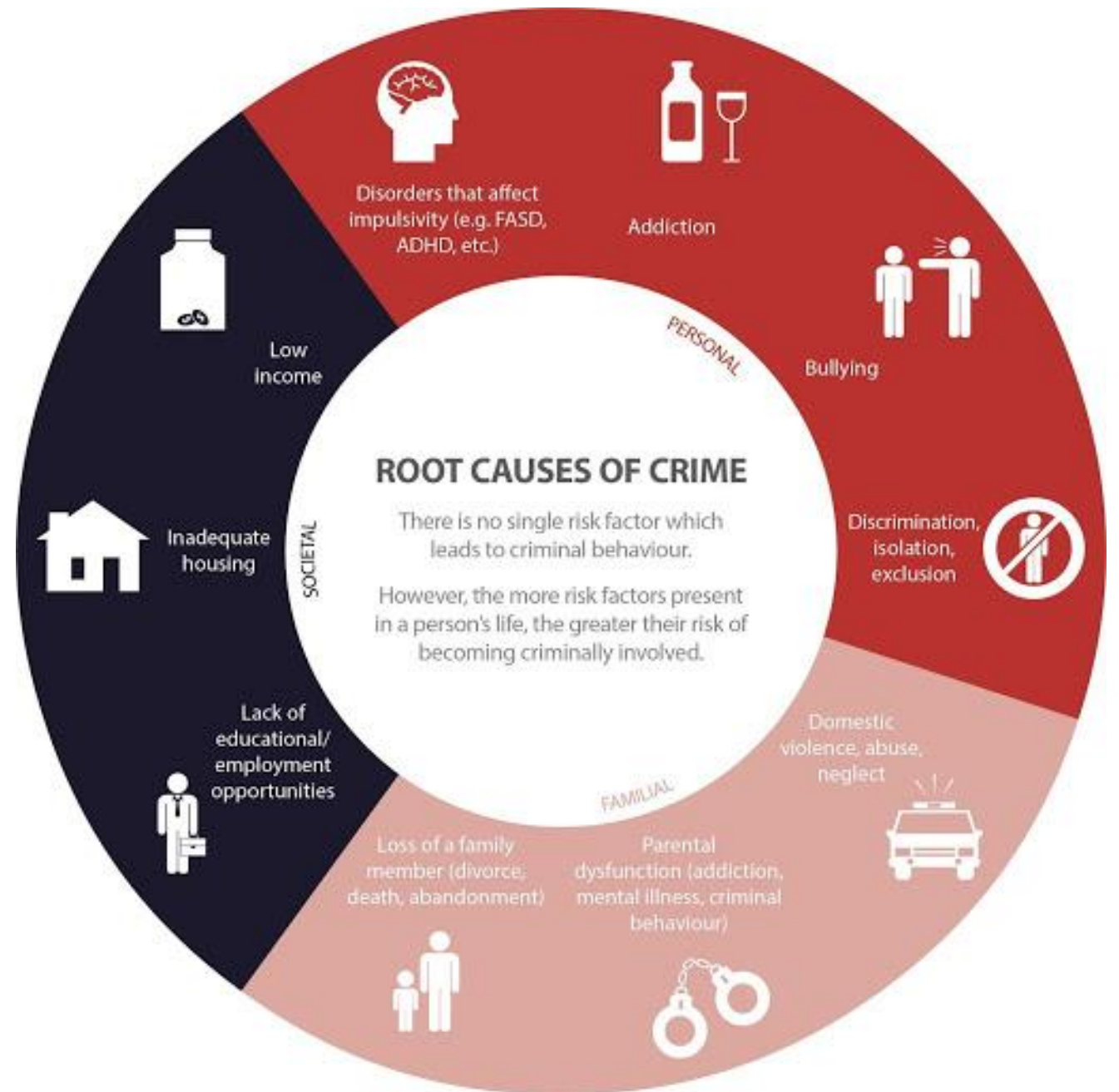


They employ over 200,000 people; that's 1 in 60 jobs or 1.6% of the Australian workforce. This is about the same number of people as employed in arts and recreation services or the mining industry.

# Work Integration Social Enterprises (WISEs)

- “Exist to provide employment, or pathways to employment, for people who are highly disadvantaged in the labour market” (Barraket et al, 2017)
- Focus on systemic disadvantage and discrimination, providing work and support
- Holistic, tailored, supported training / employment programs *within* the business
- Often with social support, allied health or coaching built into the organisation
- Highly inclusive organisations, good at engaging a values-aligned workforce
- Mission = societal integration and independent livelihood of disadvantaged people

# Youth crime is a complex problem with many intersecting determinants





# Australia's Youth Justice (YJ) system

- On an average day, 4,542 people aged 10-17 are under YJ supervision in Australia
- Our juvenile justice system has a skin colour, and First Australians are over-represented
- Being poor increases your likelihood of being in the justice system by 700%
- Youth recidivism rates are high and expensive
  - 57% under community supervision re-offend within 12mths
  - 85% serving a detention sentence re-offend and return within 12mths
  - \$2,827.47 a day to keep a young person in jail (\$1.03 million per year)
  - \$305.80 a day on a community order (\$110,000 per year)
- Extremely difficult for young people to transition back into the community
  - Transition: 2 months pre-release to 6 months post-release
  - Immediate days and months following release are critical to help re-engage with community, family, education and employment

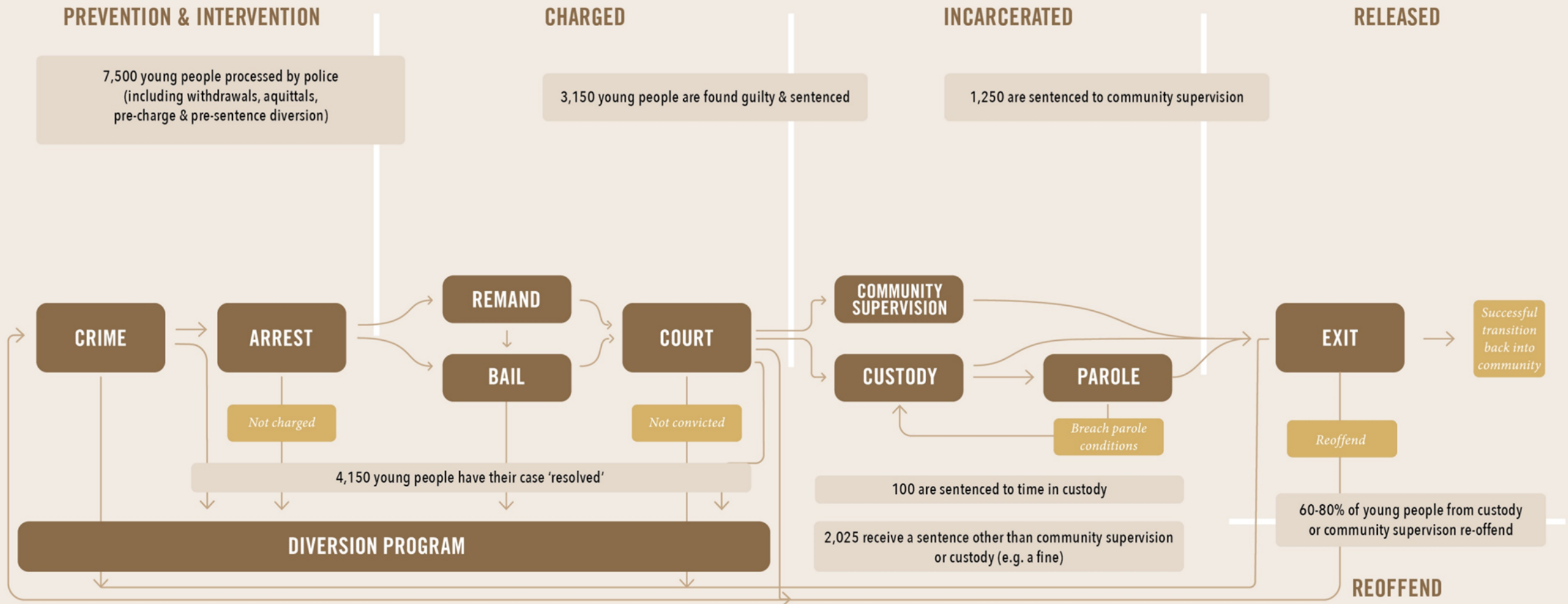
# 'School to prison pipeline'

- Punitive responses such as detention, suspensions and expulsion lead to disrupted education & early exposure to criminal justice systems
- 87% youth offenders have been suspended / expelled from school
- 33% prison students don't go past Year 9 (vs 5.6% of all Aust students)
- When students cross the line from being suspended or expelled to being arrested, school quickly becomes a thing of the past
- **WISEs create a positive environment to break this cycle**

**Refs:** <https://www.aihw.gov.au/news-media/media-releases/2019/may-1/prisoners-more-likely-to-be-homeless-unemployed-an>  
<https://profile.id.com.au/australia/schooling> | Cole, Nicki Lisa, Ph.D. (2021, August 1). Understanding the School-to-Prison Pipeline. Retrieved from  
<https://www.thoughtco.com/school-to-prison-pipeline-4136170> | How poor reading and writing feeds the school-to-prison pipeline – Nest (latrobe.edu.au)

# FOR WE ARE YOUNG AND FREE

Sadly, there are many young Victorians who are not young and free. But after years working with youth offenders, we know that it's possible to change their justice journey.



# Employment reduces offending

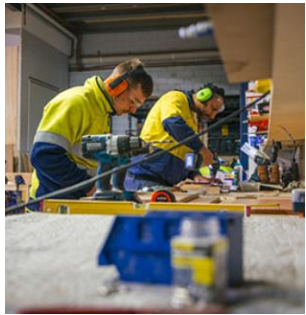
- Legal, meaningful and sustainable employment is a **key factor** in reducing offending because it:
  - Is an effective way of reconnecting people into society
  - Allows people to make a fresh start in life
  - Gives people legitimate income
  - Enables people to maintain suitable housing
  - Increases social cohesion
  - Improves family functioning
- 3 in 5 (61%) people leaving custody do not have paid employment organised on release

**Refs:** Australian Institute of Health and Welfare (AIHW) 2023, *The health of people in Australia's prisons 2022*, viewed 28 October 2024, <https://www.aihw.gov.au/reports/prisoners/the-health-of-people-in-australias-prisons-2022> | <https://www.aihw.gov.au/reports/youth-justice/youth-justice-in-australia-annual-report-2022-23/contents/fact-sheets/victoria> | <https://www.redcross.org.au/globalassets/corporatecms-migration/justice/connecting-talent-shortages-to-those-who-can-work.pdf> | <https://vpsc.vic.gov.au/html-resources/guidance-for-conducting-police-checks/#:~:text=Employers%20do%20not%20have%20a,fulfil%20the%20inherent%20requirements%20of> | <https://www.aihw.gov.au/news-media/media-releases/2019/may-1/prisoners-more-likely-to-be-homeless-unemployed-an>

# How WISEs contribute to crime prevention

- **Social determinants of health are relevant to crime**
  - Education, Employment, Housing & Social connectedness
- **Addressing social determinants of health helps prevent crime**
  - A criminal record is a significant barrier in securing employment
  - Yet employment is a critical in reducing recidivism and crucial for social mobility and health equity
  - Having access to positive and meaningful work creates a circuit-breaker to negative peer influences
- **WISEs address social determinants of health**
  - People-centred, supportive environment that fosters connection, social bonds and belonging
  - WISEs provide tailored support based on the individual's needs
  - Combine personal, life and work skills alongside employment and training
  - Offer pathways to reduce structural barriers to meaningful employment due to lack of education, stable housing or the stigma of a criminal record

# Examples of WISEs that target crime prevention



- YMCA ReBuild**
- Melbourne, VIC
  - Young people with Justice Experience
  - Construction



- Fruit2Work**
- VIC & QLD
  - Men with Justice Experience
  - Fruit & milk delivery to offices



- Success Work Partners**
- Sydney, NSW
  - Women with Justice Experience
  - Employment service



- Torch**
- VIC
  - First Nations men and women with Justice Experience
  - Art, cultural & arts industry



- Recycle for Change**
- Footscray, VIC
  - Women & young people affected by Justice System
  - Container deposit scheme



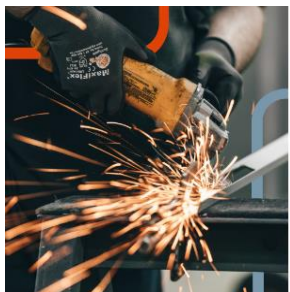
- STREET**
- Melb, VIC
  - 16-24 yo including those with Justice Experience
  - Hospitality
  - Horticulture



- Sweet Justice**
- Bendigo, VIC
  - Youth & adults with Justice Experience
  - Beekeeping



- Backtrack Works**
- NSW
  - Young people with Justice Experience
  - Training & employment



- Reboot**
- VIC, QLD & WA
  - Adults with Justice Experience
  - Employment service



- ConFit**
- Sydney, NSW
  - Young people with Justice Experience
  - Fitness



- Fair Threads**
- Geelong, VIC
  - People with Justice Experience
  - Prison-compliant clothing service



- The Bridge**
- VIC
  - 12-25 yo with Justice Experience
  - Training



# STREAT's purpose is to help young people thrive and belong with a healthy sense of self, work and home

- Healthy self
  - Positive relationships
  - Physical and emotional health
  - Personal support and mentoring
- Healthy work/learning
  - Help with learning and work
  - Training with kind and fun people to teach you
  - Real work experience
- Healthy home
  - Somewhere safe and suitable to live
  - Learn budgeting to save and spend money properly
  - New friends who are positive and kind



# Identity & belonging

- Belonging is important to all of us
- Identify with crime behaviour (status)
- Can result a 'crime identity'
- Re-offend to be with your crew
- It's hard to identify elsewhere
- Who else am I?
- STREAT trainees rate their sense of trust, connection and belonging with STREAT at 84%



	YJ risk factors	YJ protective factors	Addressed by STREAT
Community	Poverty, drugs	Cooperation, stability, good relations with adults	Yes
School	Academic failure, poor relationship in school, antisocial behaviour, bullying, low parental interest	A sense of belonging, positive attachments	Yes
Family	Drug & alcohol use, conflict, harsh or inconsistent parenting, marital instability or conflict, favourable parental attitudes towards risk taking behaviour	Connectedness to family, feeling loved and respected, proactive problem solving and minimal conflict during infancy, family rituals, warm relationships with at least one parent, absence of divorce during adolescence	Yes, in so far as we demonstrate healthy relationships, respectful boundaries & role model proactive problem-solving
Individual / peer	Alienation, rebelliousness, hyperactivity, aggression, novelty seeking; seeing peers taking drugs, friends engaging in problem behaviour, favourable attitude towards and early initiation of behaviour	Temperament, autonomy, development of skills, enthusiasm for life, work success during adolescence	Yes



STREAT has:

- Kiosks
- Cafes
- Gardens
- Artisan bakery
- Catering company
- Coffee roastery
- Events space
- Learning & development
- Consultancy
- Demo projects

# STREET TRAINING SITES

Gipps Street Pantry, 71 Gipps Street, Collingwood

Cromwell Cafe, 66 Cromwell Street, Collingwood

RMIT Cafe, Bowen Street, Melbourne

ARUP (Corporate), Collins Street, Melbourne

HESTA (Corporate), Collins Street, Melbourne

RACV Kiosk, 485 Bourke Street, Melbourne

Gate 8, 88 Jolimont Street, East Melbourne

Forward Pocket, 253 Lennox Street, Richmond

Australia Post (Corporate), Swan Street, Richmond



**INTEGRATED JUSTICE SITE**  
Parkville Cafe  
900 Park Street  
Parkville



**INTEGRATED WISE PATHWAY SITE**  
Queen Victoria Market  
Shop 26, F Shed, Peel Street  
Melbourne



RETAIL - COFFEE & PRODUCTS



PRODUCTION KITCHEN - CATERING



YOUTH PROGRAMS



EVENTS (ONSITE & OFFSITE)

**STREAT**

# INTEGRATED PATHWAYS



BAKERY



STREATWISE



PURPOSE PRECINCT @ QVM



MOVING FEAST



Six months after graduation  
**78% of graduates** are in  
employment or training

Trainees rate their sense of  
**belonging at STREAT at**  
**84%**



## *A taste of sweet justice ...*

*“You’ve given me hope, a future and a solid job – you believed in me before I believed in myself.”*

*~~~~~*  
*“You weren’t afraid of my rap sheet. That made you the person I wanted to work with.”*

*~~~~~*  
*“When I fuck up they tell me not to stress or apologise. They just help me get it right next time.”*

*~~~~~*  
*“They make us feel as though we existed, they could see us.”*

*“They don’t look at your past, they look at your future.”*

*~~~~~*  
*“STREAT kept me from doing bad things.”*

*~~~~~*  
*“STREAT is good for keeping me out of prison.”*

*~~~~~*  
*“I learnt how good men behave.”*

*“They took the time to understand me from the get-go. My problems and all the shit issues and rap sheet. But also stuff I was good at, and what I wanted to do – my own dreams and plans. And then they built respect. It was slow and I was hard work. They hung in there. They set limits and gave me feedback, and I wasn’t always grateful. But all this helped me get closer to the future I wanted. I see now it was good. Most services don’t bother with all that. Especially for kids out of prison. STREAT is good shit.”*

- 29% of STREAT’s young people have experience with the justice system
- 50% are survivors of trauma or violence
- 89% are disengaged from school or education
- 97% are unemployed or under-employed
- Six months after completion, 72% of STREAT graduates are still in employment, education or training

# STREAT is written into the Victorian 2030 Youth Justice Strategic Plan

- STREAT café at Parkville YJ precinct
- Delivers hospitality training and employment pathways for young people involved in Youth Justice (Cherry Creek & Parkville)
- Provide young people with the skills they need to get sustainable employment
- Written into the 2030 YJ Strategic Plan
- Featured as a case study in Youth Parole Board Annual Report (20/21)
- Pathway to STREAT's community programs and/or other positive outcomes

## Youth Justice Strategic Plan 2020–2030

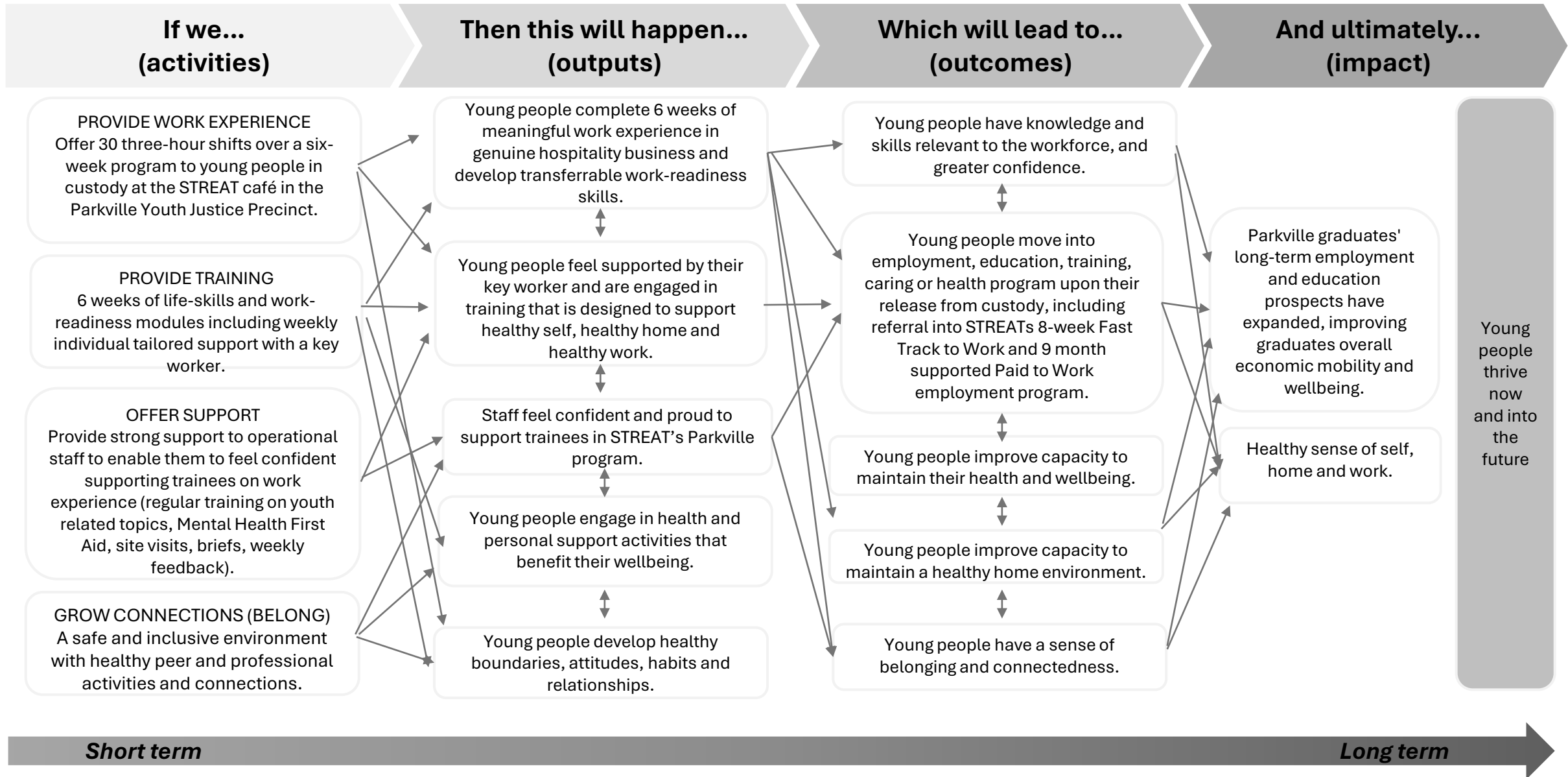
Working together to reduce youth offending and meet the needs of children and young people





# STREAT Youth Programs: Parkville Thyme Out cafe

(STREAT Strategic Goal 1: Provide supported employment pathways into the food system for marginalised young Victorians)



# STREAT Parkville Thyme Out café outcomes since March 2020

- 23 of 36 places filled (8 Malmsbury, 15 Parkville, 8 CALD, 3 First Nations, 12 neither)
- 87% of trainees completed their 6-week program (20 of 23)
- 743 hospitality shifts offered, 83% completed
- 157 work readiness sessions offered, 99% completed
- 7,473 hours of training and support provided
- Of the 20 who completed the full 6-week program:
  - 15 remained in custody because their release wasn't imminent
  - 3 transitioned to STREAT community program
  - 2 transitioned to study or work elsewhere

# Parkville Café Program trainee feedback

	Average overall
I felt welcome and supported in the STREAT Parkville Café Program	94%
I found the topics covered in the individual sessions with Youth Programs worker useful	87%
I feel more confident about my next steps	92%
How much of this confidence is connected to STREAT Parkville Cafe program?	79%
<b>Net Promoter Score (NPS)</b> <i>(NPS is a satisfaction benchmark that measures how likely customers (participant trainees in this case) are to recommend the program to a friend. An NPS score above 0 is "Good". It means that your audience is more loyal than not. Anything above 20 is considered "Favourable". Bain &amp; Co, the source of the NPS system, say that above 50 is "Excellent", and above 80 is "World class". 100 is Extraordinary!</i>	93

# What Parkville trainees learnt about themselves

- "I never thought I'd be able to serve people to talk to them the way I do and serve coffee, I learned a lot of things here"
- "I learned I am capable of challenging myself doing different things, I would of never worked in a café until I did this program"
- "I learned I am confident if I am around good people who lift me up and are encouraging"
- "I learned how to work in a team"

## Creating cultural job pathways

1

First Nations and Culturally And Linguistically Diverse (CALD) young people are over-represented in Victoria's justice system. We'd love to deepen our work with cultural communities to create job pathways that strengthen and celebrate young people's connections to Country and culture. Examples might include pathways for First Nations youth into cultural land management or cultural tourism, or migrant young people cooking their cultural food dishes within a cultural caterer or creating cultural art or crafts for retail sale within social enterprise shops. We're already incubating some of these ideas at the new social enterprise Purpose Precinct at the historic Queen Victoria Markets in Melbourne's CBD.

### INGREDIENTS

- 1. Data on Regional Offending Hotspots:** Gather data from DJCS/Corrections Victoria to identify regional areas with high rates of offending and a significant proportion of young people on orders or incarcerated. This information helps pinpoint areas where targeted support is needed to prevent re-offending and facilitate successful reintegration into the community.
- 2. Investment in Justice Employment Team:** Secure investment to assemble a specialised team of justice workers who will play a vital role in engaging social enterprise and industry partners willing to provide training and employment pathways for young people in the justice system. Their expertise and commitment will be instrumental in supporting young people across the state.
- 3. Identification of WISEs and Industry Partners:** Identify and connect with WISEs and industry partners across Victoria who are committed to employment young people in the youth justice system. These partners recognise the importance of providing meaningful employment opportunities in regional communities, thereby contributing to crime prevention and community development.

### METHOD

*Before we design and implement new initiatives, it's crucial to conduct comprehensive research into existing cultural programs and services within Victorian custodial centres and communities, particularly focusing on the needs and experiences of First Nations and CALD young people. We need to identify key gaps and opportunities for tailored innovative interventions. Establishing strong partnerships with social enterprises statewide is essential, ensuring that the creation of any new training and employment pathways are accessible and culturally relevant for all young people across Victoria, regardless of background. All partnerships must be built on understanding, trust, shared goals, and a shared commitment to cultural inclusivity. By bringing together the knowledge and expertise of partner organisations, we can create training and employment pathways that empower and support First Nations and CALD young people in youth justice to thrive.*

## Creating supports that move with a young person

2

One of the challenges we currently face is that the incarcerated young people we work with in the city, often return to their regional communities upon release, sadly to find no work opportunities in their community. This frequently results in young people re-offending and ending up back in custody. We'd love to build a state-wide team of justice workers and industry partners who can support young people into training and employment pathways.

### INGREDIENTS

- 1. Data on Regional Offending Hotspots:** Gather data from DJCS/Corrections Victoria to identify regional areas with high rates of offending and a significant proportion of young people on orders or incarcerated. This information helps pinpoint areas where targeted support is needed to prevent re-offending and facilitate successful reintegration into the community.
- 2. Investment in Justice Employment Team:** Secure investment to assemble a specialised team of justice workers who will play a vital role in engaging social enterprise and industry partners willing to provide training and employment pathways for young people in the justice system. Their expertise and commitment will be instrumental in supporting young people across the state.
- 3. Identification of WISEs and Industry Partners:** Identify and connect with WISEs and industry partners across Victoria who are committed to employment young people in the youth justice system. These partners recognise the importance of providing meaningful employment opportunities in regional communities, thereby contributing to crime prevention and community development.

### METHOD

*Map out DJCS regional locations with high rates of offending and young people serving orders or incarcerated. Establish a team of justice employment workers tasked with activating a collective approach to supporting young people in these regions. Their focus will be on preventing entry or re-entry into the justice system and ensuring successful reintegration for those returning to their communities. By forging relationships with Victorian social enterprises, industry partners and engaging young people in custody, this team will facilitate training and employment pathways in regions of high need.*



# Integrating services to connect cities and regions

# 3

STREAT currently train young people within inner Melbourne, but we'd love to partner with others to create integrated job pathways across the whole state. Our starting point would be our existing industry partners and the 3,500 social enterprises across Victoria.

## INGREDIENTS

---

**1. Data on Regional Offending Hotspots:** Gather data from DJCS/Corrections Victoria to identify regional areas with high rates of offending and a significant proportion of young people on orders or incarcerated. This information helps pinpoint areas where targeted support is needed to prevent re-offending and facilitate successful reintegration into the community.

**2. Investment in Justice Employment Team:** Secure investment to assemble a specialised team of justice workers who will play a vital role in engaging social enterprise and industry partners willing to provide training and employment pathways for young people in the justice system. Their expertise and commitment will be instrumental in supporting young people across the state.

**3. Identification of WISEs and Industry Partners:** Identify and connect with WISEs and industry partners across Victoria who are committed to employment young people in the youth justice system. These partners recognise the importance of providing meaningful employment opportunities in regional communities, thereby contributing to crime prevention and community development.

## METHOD

---

*Map out DJCS regional locations with high rates of offending and young people serving orders or incarcerated. Establish a team of justice employment workers tasked with activating a collective approach to supporting young people in these regions. Their focus will be on preventing entry or re-entry into the justice system and ensuring successful reintegration for those returning to their communities. By forging relationships with Victorian social enterprises, industry partners and engaging young people in custody, this team will facilitate training and employment pathways in regions of high need.*

REGION  
**BALLARAT**

DJCS CLIENTS  
**19 (5%)**

WISE  
Apiary  
BGT Jobs and Training  
HiveMind Community  
Our Kitchen

**ALLIED  
CORRECTIONAL  
SERVICES  
ACROSS  
VICTORIA**

**BALLARAT**

**BROADMEADOWS**

**SUNSHINE**

**PRESTON**

**RINGWOOD**

**DANDENONG**

**FRANKSTON**

**GEELONG**

REGION  
**BALLARAT**

DJCS CLIENTS  
**19 (5%)**

WISE  
Apiary  
BGT Jobs and Training  
HiveMind Community  
Our Kitchen

REGION  
**BROADMEADOWS**

DJCS CLIENTS  
**47 (13%)**

WISE  
SHEforce Labour Hire  
BRITE Nursery

REGION  
**DANDENONG**

DJCS CLIENTS  
**60 (16%)**

WISE  
Skillinvest  
Social Engine Australia

REGION  
**FRANKSTON**

DJCS CLIENTS  
**33 (9%)**

WISE  
Flo Landscapes / SP Worx  
Skillinvest  
Tanti Park Social  
Enterprises (trading as  
HomeGround)

REGION  
**GEELONG**

DJCS CLIENTS  
**21 (6%)**

WISE  
BST Services Pty Ltd  
Commonground Project  
Fair Threads  
GROW  
My Maintenance Crew  
Unisus

REGION  
**PRESTON**

DJCS CLIENTS  
**13 (3%)**

WISE  
Ceres  
Clothing the Gap  
Homie  
Reboot  
STREAT

REGION  
**RINGWOOD**

DJCS CLIENTS  
**21 (6%)**

WISE  
Mullum Mullum  
Indigenous Gathering  
Place - Mullum Creations

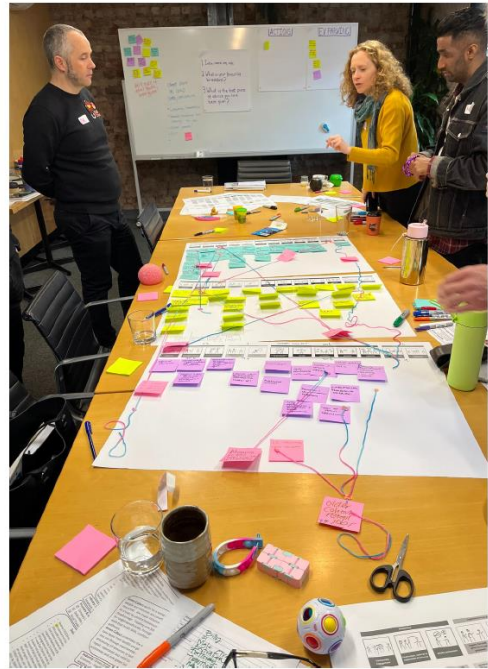
REGION  
**SUNSHINE**

DJCS CLIENTS  
**57 (15%)**

WISE  
Cleanable  
Fruit2work  
Good Cycle  
Green Collect  
NewLife - Shield  
ReBuild  
Roxx Industrial  
STREAT

# Imagine what we could do if we networked the WISEs?

- Mapping model tested with approx. 25 WISEs
- WISEs map their model on a common framework
- Enterprises work in an 'employment ecosystem' with transition points between them
- Participants can have a variety of individually tailored stepping stones towards work



# STREATwise free resources for social enterprises



## Training dogs to do the work that humans often can't

4

We really wish everyone could see what happens when Magic, STREAT's therapy dog, visits incarcerated young people alongside our justice team! We've consistently found that for young people suffering with high levels of neglect, abuse, trauma and incarceration, a therapy dog can effortlessly bridge the gaping gap of trust between the young person and the adults tasked with helping them. We think that every single children's court, community detention centre, and custodial centre should have a team of therapy dogs working alongside their helping humans.

### INGREDIENTS

- 1. Data on Regional Offending Hotspots:** Magic, STREAT's therapy dog and advocate, is a powerful example of the positive impact therapy dogs can have on incarcerated young people. Magic's presence highlights the potential for therapy dogs to bridge the trust gap between young people and adults in challenging situations.
- 2. Investment in Justice Employment Team:** Secure funding to pilot the use of therapy dogs in custodial centres, children's courts, community detention centres, and custodial centres. This investment is essential for assessing the feasibility and effectiveness of integrating therapy dogs into existing support systems.
- 3. Endorsement and Support from DJCS & Corrections Victoria:** Gain endorsement and support from the DJCS, Corrections Victoria and private correctional centre operators for the implementation of therapy dog programs in youth justice settings.

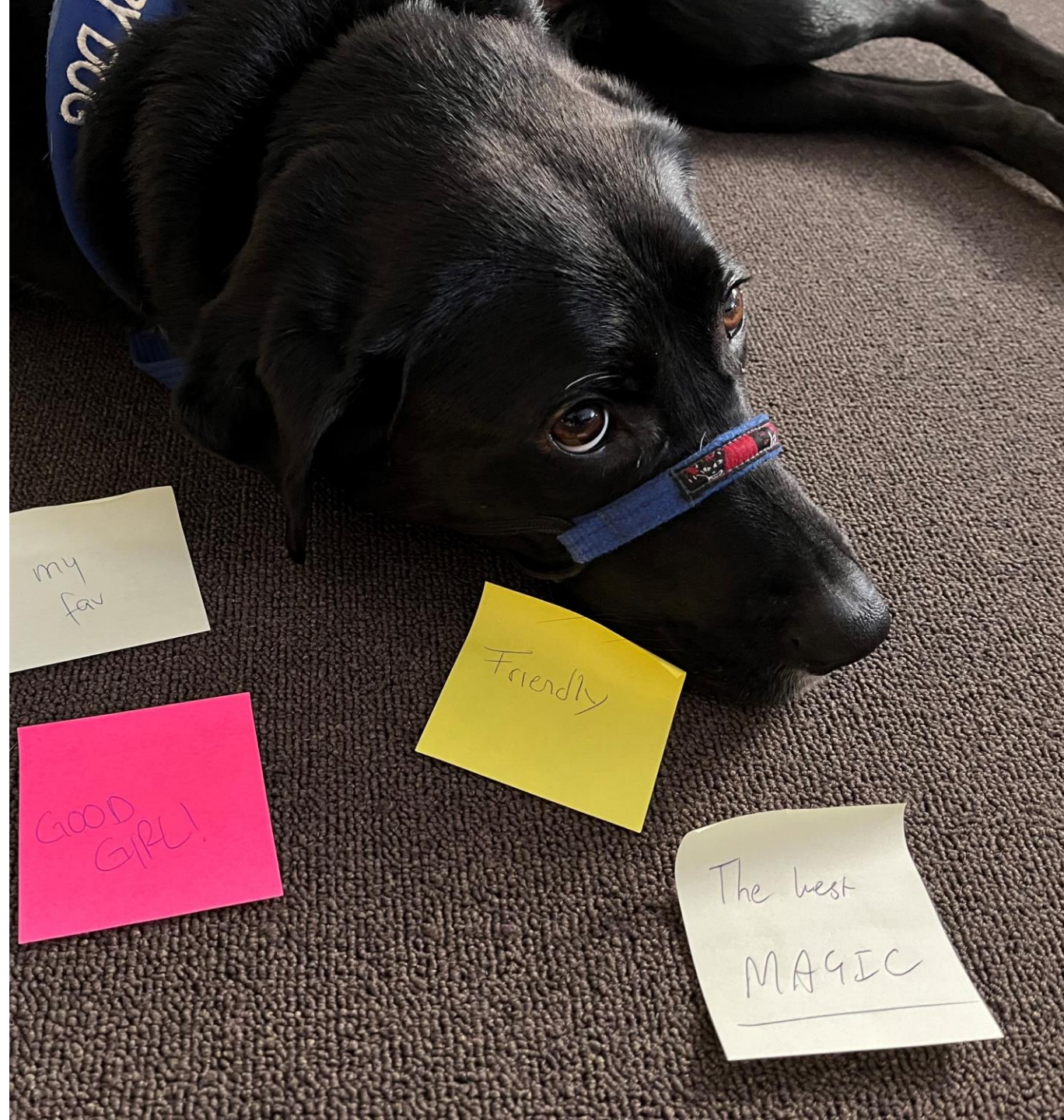
### METHOD

*Explore the potential benefits and challenges of introducing therapy dogs into custodial centres, children's courts and community detention centres. Conduct thorough research and consultation to develop a pilot program that addresses the unique needs, circumstances of incarcerated young people, and highlights the need, benefits and significant impact therapy dogs can provide. Collaborate with stakeholders, including DJCS and Corrections Victoria, to obtain support and resources for the pilot implementation.*



# Benefits of therapy dogs & animal assisted therapy

- Create an inviting & warm environment
- Help people feel safe
- Increased feelings of relaxation
- Improved mood and reduced depression
- Improve body's stress response
- Increase self-worth & self-esteem
- Learn by doing, not just talking
- Comfort during tough times



## Deepening government social procurement in justice

5

The Victorian government's social procurement framework is world-leading and has harnessed the government's expenditure across many industries to drive and grow impact within the social enterprise sector. There are still many goods and services that could be procured, including within the state's detention and correctional centres that all need foodservices, cleaning, laundry services, garden maintenance, waste management, building repairs, IT, and tech services.

### INGREDIENTS

**1. Mapping of Current Services and Goods:** Mapping of the existing services and goods procured by DJCS, Corrections Victoria, correctional centres and government departments. Identify areas where social enterprises could feasibly provide goods and services, such as foodservices, cleaning, laundry services, garden maintenance, waste management, building repairs, IT, and tech services.

**2. Commitment from Corrections Victoria & DJCS:** Secure a strong commitment from Corrections Victoria and DJCS to allocate a percentage of their procurement budget to social enterprises. This commitment is essential to driving the growth and impact of social enterprises within the justice system.

### METHOD

*Combine the mapped-out services and goods with the commitment from Corrections Victoria and DJCS to create a solution that is not only effective but also satisfying. This solution should be easy to implement and integrate into existing government procurement processes, ensuring seamless transition and ongoing support for social enterprises.*

## Learning, sharing and funding justice innovation

6

Victoria has a number of social enterprises doing game-changing work with offenders, including YMCA's Bridge Project and ReBuild, Fruit2Work, The Torch, Sweet Justice, Fair Threads and STREAT. We'd love to build a Justice Community of Practice for social enterprises that would create stronger peer-to-peer knowledge exchange, capacity-building, and collaboration opportunities in this critical area of work. We'd also love to explore collective research with our peers and academics. For example, many social enterprises track and evaluate the impact of their justice programs, including their stronger track record of reducing recidivism than other government-funded programs and interventions. However, there's currently no consolidated research within the sector that demonstrates the savings to governments and positive community impacts of our innovative programs. STREAT's own research with RMIT University estimates that the organisation has saved governments over \$155m in direct expenditure since 2010, but collective data is critically needed. Another ongoing concern facing social enterprises is the lack of financial assistance to offset the costs they incur to engage, train, employ, and provide intensive support to positively impact the lives of young people within youth justice. We feel strongly that social enterprises delivering significant social impact and savings to government should be funded for their outcomes.

### INGREDIENTS

**1. Investment/Funding or Pro Bono Support:** Secure resources to commission consolidated research and collect data on the social impact of justice programs delivered by social enterprises. This data is essential for demonstrating the savings to governments and positive community impacts of innovative interventions.

**2. Establishment of Justice Community of Practice:** Create a Justice Community of Practice (CoP) in both metropolitan and regional locations. This platform fosters peer-to-peer knowledge exchange, capacity-building, and collaboration opportunities among social enterprises working in the justice system.

**3. Funded Outcomes Model:** Secure a pilot outcomes payment model for WISEs supporting young people in the youth justice system, who've been out of work for at least 9 out of the last 12 months to gain supportive and sustainable employment. Seek funding for WISEs to be paid for each employment placement outcomes they create at 6, 12 and 18 months. These payments are designed to cover the costs of wrap-around supports.

### METHOD

*Adopt a collaborative approach to delivering innovative solutions to challenges within the justice system by leveraging the unique flavours of Victorian social enterprises. Facilitate knowledge exchange, capacity-building, and collaboration through the Justice CoP, allowing members to share insights, resources, and expertise to collectively address common issues and drive positive change.*

# MULTI-MILLION MANI

In 2018 STREAT undertook extensive modelling with RMIT University to calculate its value to government based upon current figures from the Victorian Department of Treasury and Finance. STREAT is estimated to save the government and social services sector at least \$33,000 per year per young person across their life. This can add up to millions across a single lifetime.

## MEET 16 YEAR OLD MANI, A TYPICAL YOUNG PERSON AT STREAT. HE...

- Has never met his father, and his family are scattered around Australia and overseas
- Left school part way through year 9
- Is unemployed and on Newstart allowance
- Is couch surfing
- Smokes cannabis daily to manage nightmares and anxiety
- Is on a Good Behaviour Bond after he and a mate stole a car
- Subsequently breached his orders and is now at risk of going to prison



## PER YEAR, HE COSTS THE GOVERNMENT

**\$50,000**

in emergency, police, hospital, legal, health, psychological and unemployment services

## 30 YEAR OLD MANI HAS NOW COST THE GOVERNMENT OVER \$750,000



## 46 YEAR OLD MANI HAS NOW COST THE GOVERNMENT OVER \$1.55 MILLION



## 76 YEAR OLD MANI HAS NOW COST OVER \$3.05 MILLION

## STREAT INTERVENED EARLY AND PROVIDED MANI WITH...

- Stable transitional housing
- Counselling
- Help reducing his drug use
- Work experience and training within its cafe and bakery
- Vocational training qualifications in hospitality
- Transition support into a chef apprenticeship with a partner employer
- A group of supportive friends, mentors and workmates
- Confidence, a sense of belonging and hope!

## IT COSTS STREAT

**\$45,000**

to provide the holistic support, training and employment pathways that Mani needed and wanted.

(STREAT receives less than 1% of its funding from government, and generates over 70% of its revenue through its social enterprises.)

## BY BREAKING THE CYCLE, STREAT HAS NOW SAVED THE GOVERNMENT OVER \$500,000

## STREAT HAS NOW SAVED THE GOVERNMENT OVER \$1 MILLION

## STREAT HAS NOW SAVED THE GOVERNMENT OVER \$2 MILLION!

STREAT's work provides saving and exceptional value for governments.

Since 2010, STREAT has saved governments over \$155 million.\*

\* Victorian state government: \$64m, Commonwealth government: \$91m. (STREAT receives less than 1% of government funding each year.)

Government Savings	At June 2023	By 2025	By 2030	By 2040
Victorian Government	\$64,098,200	\$84,788,889	\$135,831,291	\$342,617,426
Federal Government	\$91,132,151	\$120,549,312	\$193,119,273	\$487,119,186
<b>TOTAL SAVINGS</b>	<b>\$155,230,351</b>	<b>\$205,338,201</b>	<b>\$328,950,564</b>	<b>\$829,736,609</b>

## Creating future-focussed custodial industries and pathways

7

We believe there's a strong opportunity to create a range of social enterprises embedded within custodial centres and correctional centres across the state, and we're inspired by many examples overseas, including Redemption Roasters in the UK, Jail Guitar Doors in the UK, Code4000 in the UK that creates coding and tech jobs, and UNICOR in the US that manufactures textiles, electronics, and furniture. The Climate Council estimates that there's over 78,000 green jobs needed across Australia to help with the country's climate transitions, with over 30% being vocational-level roles. We think there's so many latent opportunities, particularly into the industries of the future.

### INGREDIENTS

- 1. Multiple Corrections Centres Open to Exploration:** Engage with multiple corrections centres to foster a collaborative approach towards embedding more social enterprises within their facilities. Seek a shared vision for creating meaningful, realistic and sustainable career pathways starting from within correctional walls, encouraging a culture of innovation leading to an increase of connection for young people re-entering the community upon release.
- 2. Partnership with DJCS & Corrections Victoria:** Build strong partnership with DJCS Corrections Victoria to support the embedding of social enterprises within correctional centres. Collaborate closely with key stakeholders to navigate regulatory frameworks and ensure the success of these initiatives.
- 3. Funded Outcomes Model:** Establish gardens, garden sheds, and greenhouses within custodial centres to cultivate fresh produce. This initiative not only provides valuable horticultural training and therapeutic benefits for inmates but also supplies fresh produce for consumption within correctional centres and distribution to various food services in the community. View as a value add to current standard industries services designed to cover the costs of wrap-around supports.

### METHOD

Begin by gaining a comprehensive understanding of the current parameters surrounding the provision of industries within correctional centres. Collaborate with established social enterprises and correctional industries leaders to blend entrepreneurial minds with specialised knowledge and experience. This fusion of expertise will lead to the development of innovative and sustainable solutions that create realistic and achievable career pathways for incarcerated young people.

## Upskilling industry partners to work with young offenders

8

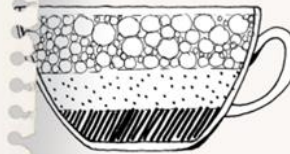
STREAT has over 10 years of working intensively with industry partners who provide open employment to our graduates. Our effective model supports both young people and their new employer as they make the transition into their new job. This program could be expanded to other industries and locations.

### INGREDIENTS

- 1. Proven Fast Track To Work (FT2W) & Paid To Work (P2W) Program Models:** Build on the successful program models of STREAT's Fast Track To Work and Paid to Work to build capabilities of industry partners to work with young people in the justice system. These programs have demonstrated effectiveness in supporting both young people and their employers during the transition from learning to earning.
- 2. Identification of Industry Partners:** Identify and engage with industry partners across Victoria who demonstrate a willingness and commitment to provide training and employment pathways for young people in the justice system, aligning with STREAT's mission and values.
- 3. Diverse Training and Employment Pathways:** Offer a diverse range of training and employment pathways across multiple industries to cater to the unique interests and skills of young people in the justice system. By providing options that align with their interests, passions and strengths, we can increase their chances of building successful careers whilst significantly decreasing their risk or recidivism.
- 4. Specialise Training for Industry Partners:** Deliver specialised training modules designed to educate, prepare, and support industry partners in employing young people within youth justice. It is crucial to build understanding and confidence amongst our industry partners to enhance successful outcomes.

### METHOD

Expand on the successful Fast Track To Work and Paid to Work program models by extending them to new industry partners across the state. Share STREAT's sector knowledge and expertise with these partners, building their confidence and capabilities to provide effective training and career pathways for young people in the justice system statewide. By diversifying and expanding the menu of opportunities available to young people, we can empower them to realise their full potential and contribute positively to society.



## Countering violent extremism (CVE) in young people

9

STREAT's co-founder Dr Kate Barrelle is a clinical and forensic psychologist who works nationally and globally with police, justice agencies, hostage negotiators, social workers, community groups, religious organisations, and researchers to counter violent extremism. She's the co-author of Radar and PIM Tools, used across local, state, and national jurisdictions for CVE interventions. She's on the Victorian Expert Advisory Committee for CVE and consults widely as part of STREAT's focus on crime prevention. Social enterprise, particularly jobs-focussed social enterprises which offer tailored, holistic, and supported pathways from learning to earning, have a huge amount to offer young people in terms of a pathway away from violence and hate towards societal reintegration and belonging. STREAT can help get other social enterprises ready to work with this cohort, as well as help intervention programs understand the conditions required for young people to get their needs met in healthy ways away from antisocial groups and movements.

### INGREDIENTS

- 1. Subject Matter Expert & Intellectual Property (IP):** Dr. Kate Barrelle, a clinical and forensic psychologist with extensive experience in countering violent extremism (CVE), brings invaluable expertise and intellectual property to this initiative. Her knowledge and tools, such as Radar and PIM Tools, are widely recognised and utilised across local, state, and national jurisdictions for CVE interventions.
- 2. Growing Requirement for CVE Training:** There is an increasing demand for CVE training within the justice system, both in custodial centres and the community. This highlights the importance of implementing effective interventions to address violent extremism among young people and prevent radicalization.
- 3. Need for Expansion in Delivery:** There is a need to secure funding and/or contracts to expand the delivery of CVE interventions within custodial centres and the community. This expansion will ensure broader access to support and resources for young people at risk of violent extremism.

### METHOD

*Utilise Dr. Kate Barrelle's expertise to develop comprehensive CVE interventions tailored to the needs of young people and other key stakeholders in youth justice. Collaborate with DJCS, Corrections Victoria, community groups, and other justice agencies and stakeholders to implement these interventions effectively in custodial centres and the community. Continuously assess and adapt strategies based on emerging trends and insights to ensure their relevance and effectiveness in countering violent extremism.*

## Creating memorable welcomes for visitors to Victoria

10

Victoria has a thriving Visitor Economy with people coming from around the globe to experience the wonders of our state. We'd love to see First Nations young people play a leading role in welcoming visitors to their Country. We also think CALD young people could help host visitors from their ethnic or language groups. We couldn't imagine a more powerful way to welcome visitors and to showcase that Victoria is a state of opportunities for everyone.

### INGREDIENTS

- 1. Connection to First Nations Young People:** Engage First Nations young people in the justice system both in custody and community to take a leading role in welcoming visitors to their Country, showcasing their culture, traditions, and hospitality.
- 2. Connection to CALD Young People:** Involve CALD (Culturally and Linguistically Diverse) young people in hosting visitors from their ethnic or language groups, providing a personalised and inclusive welcome experience.
- 3. Purpose Precinct at QVM:** Build on the impactful connection this historical site offers to Justice innovation around tourism. Situated 5.2 Km from Parkville Detention Precinct with annual local and international visitor numbers totalling more than 9.1 million and half of all international visitors to Victoria, it is a perfect starting point for a demonstration pilot.

### METHOD

*Facilitate partnerships and collaborations with First Nations communities and CALD organisations to empower young people to participate in welcoming visitors to the state of Victoria. Provide training, support, and resources to ensure they are equipped to represent their cultures and communities with pride and authenticity.*





## The Purpose Precinct, Queen Vic Markets, Melbourne (F-Shed)

A WISE hub and a social enterprise marketplace focused on Victorian products with purpose that create social, environmental & cultural good.

# Conclusion

- WISEs are well suited to assist in the efforts to prevent crime
- WISEs should be embraced as holistic training and employment partners
- WISEs can play a critical role in cross-sector collaboration between governments, custodial and community justice services, cultural community groups, and businesses
  
- Where to find your local WISEs?



Find A Social Enterprise

# Social Enterprise Finder

Welcome to Social Enterprise Finder, Australia's only national directory of over 500 certified social enterprises.



employment

NSW (60)

All

60 results found

List View

Map View



You're  
**PAWSOME!**

